

Horgan's Quay

SHD Residential Development

Landscape Architecture
Design Statement

AECOM

Quality Information

Document name	Ref	Prepared for	Prepared by	Date	Reviewed by
Horgan's Quay SHD Landscape Architecture Design Statement		BAM	Mark Hammond	7th August 2019	Ross Loughnane

Revision History

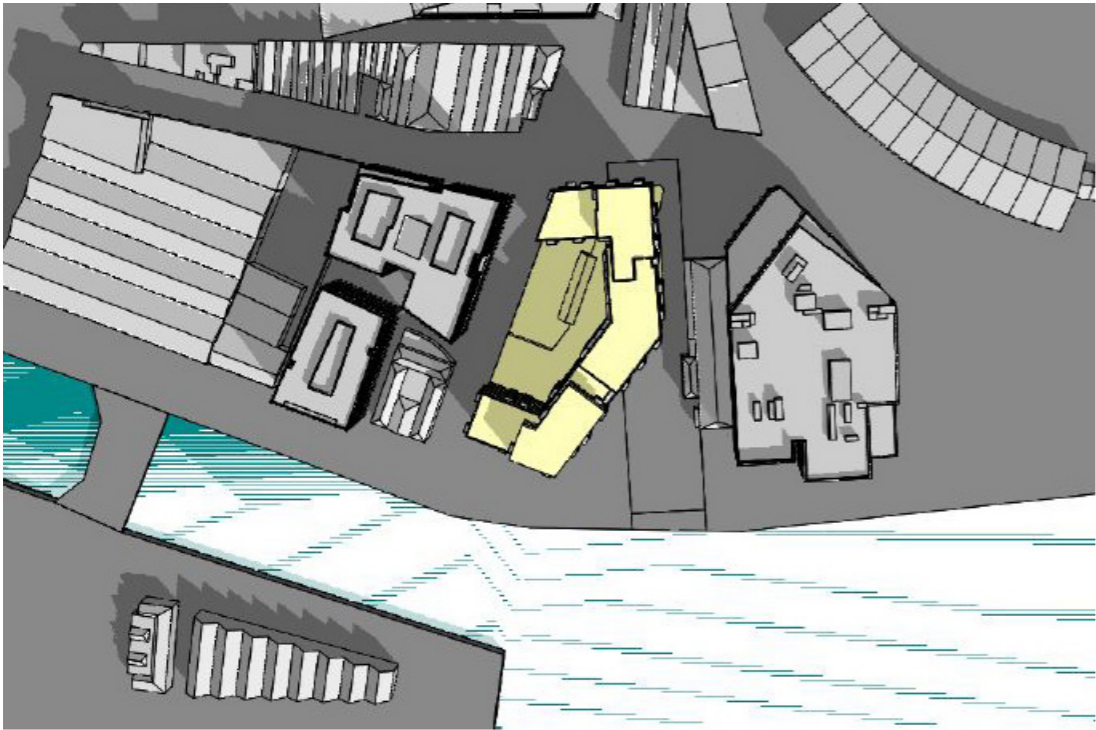
Revision	Revision date	Details	Authorised	Name	Position

This document has been prepared by AECOM Limited for the sole use of our client (the "Client") and in accordance with generally accepted consultancy principles, the budget for fees and the terms of reference agreed between AECOM Limited and the Client. Any information provided by third parties and referred to herein has not been checked or verified by AECOM Limited, unless otherwise expressly stated in the document. No third party may rely upon this document without the prior and express written agreement of AECOM Limited.

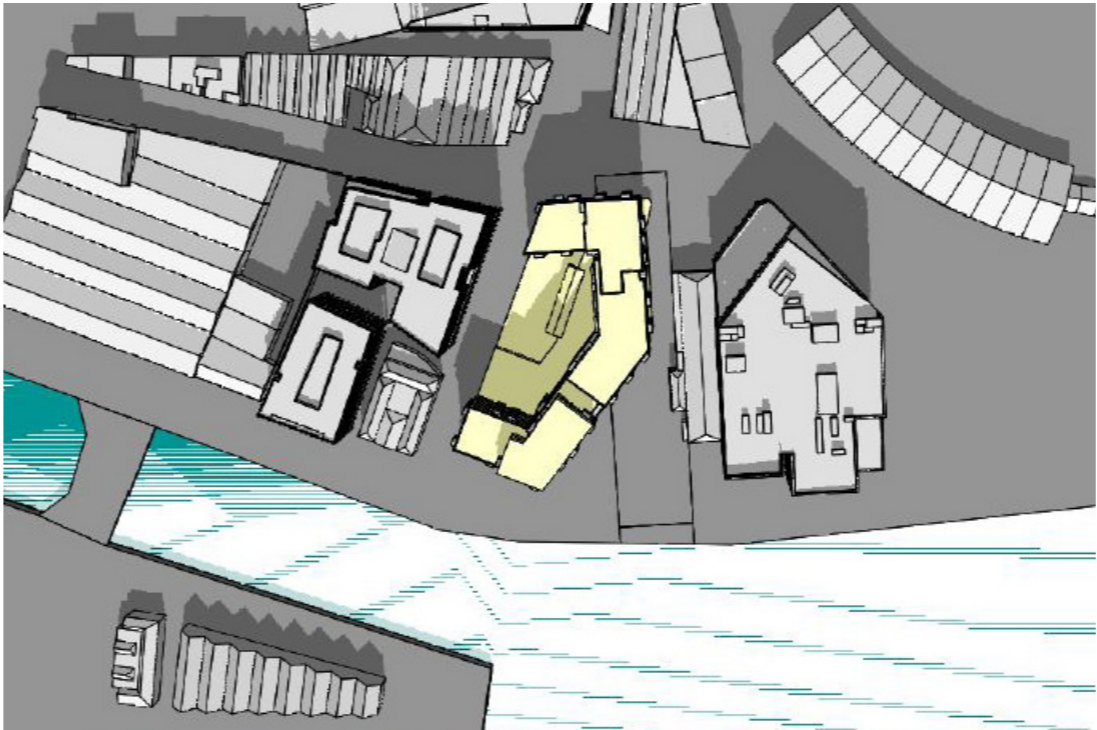
Contents

<i>01 Site Analysis</i>	<i>04</i>
<i>02 Design Strategy</i>	<i>06</i>
<i>03 Furniture</i>	<i>16</i>
<i>04 Materials</i>	<i>17</i>
<i>05 Landscape Masterplan</i>	<i>18</i>

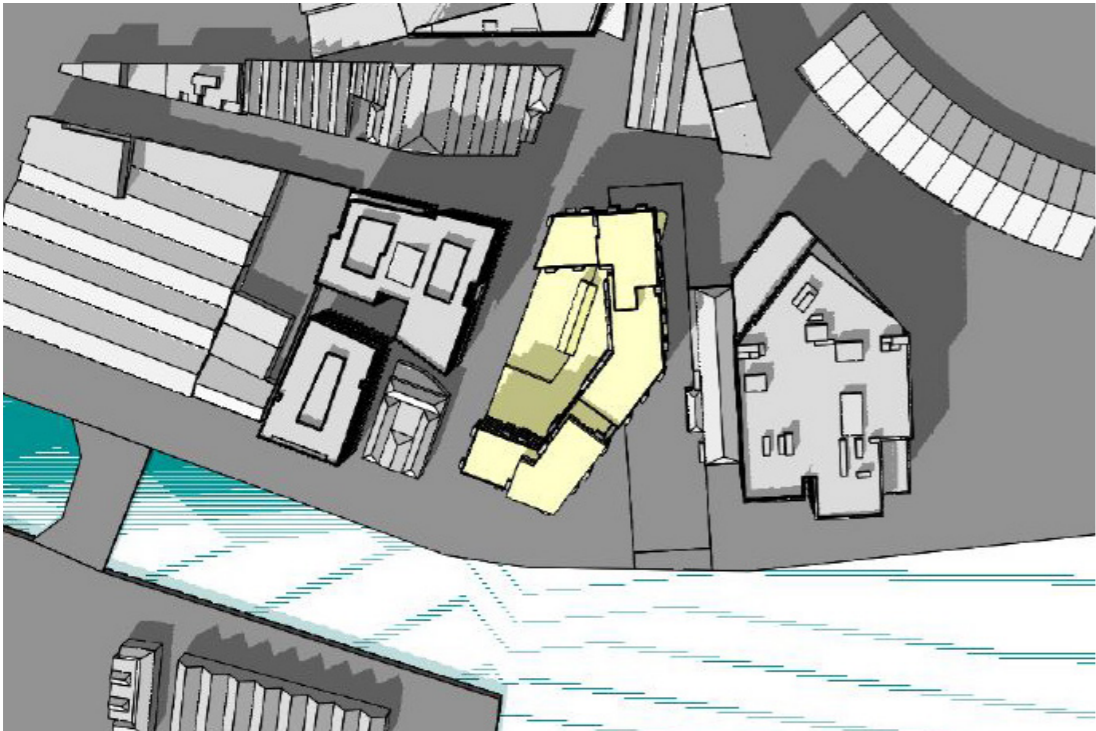
Site Analysis: Light and Shadow Study



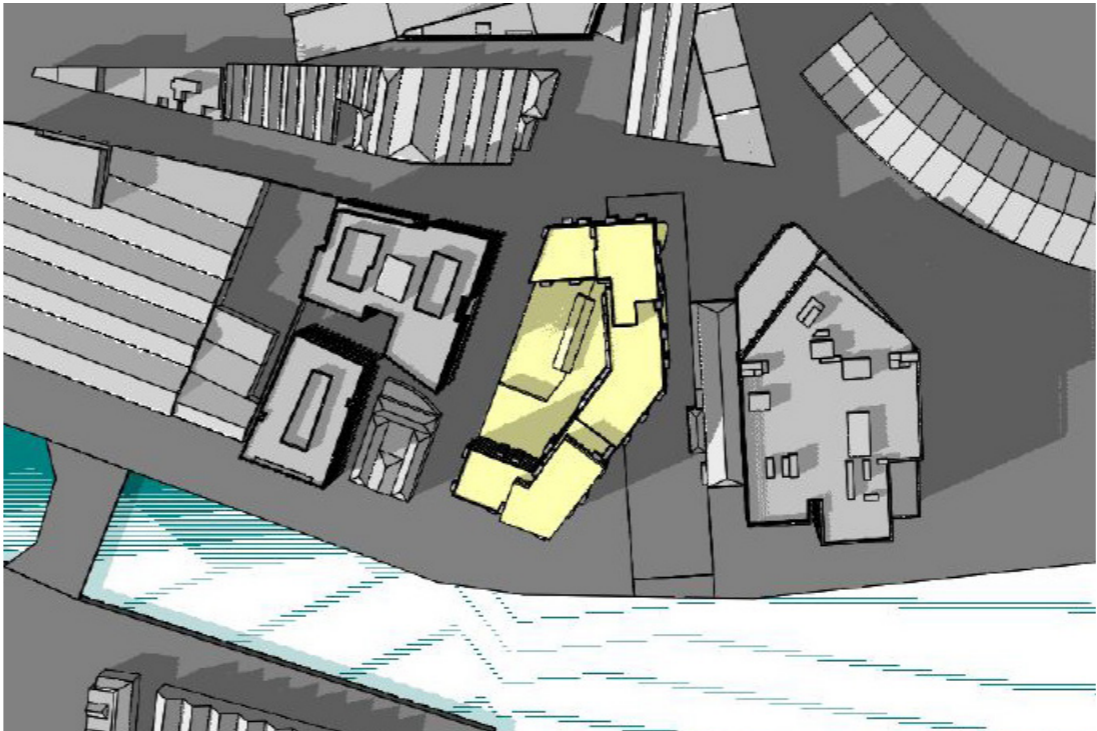
March 1000h



March 1200h



March 1400h



March 1600h

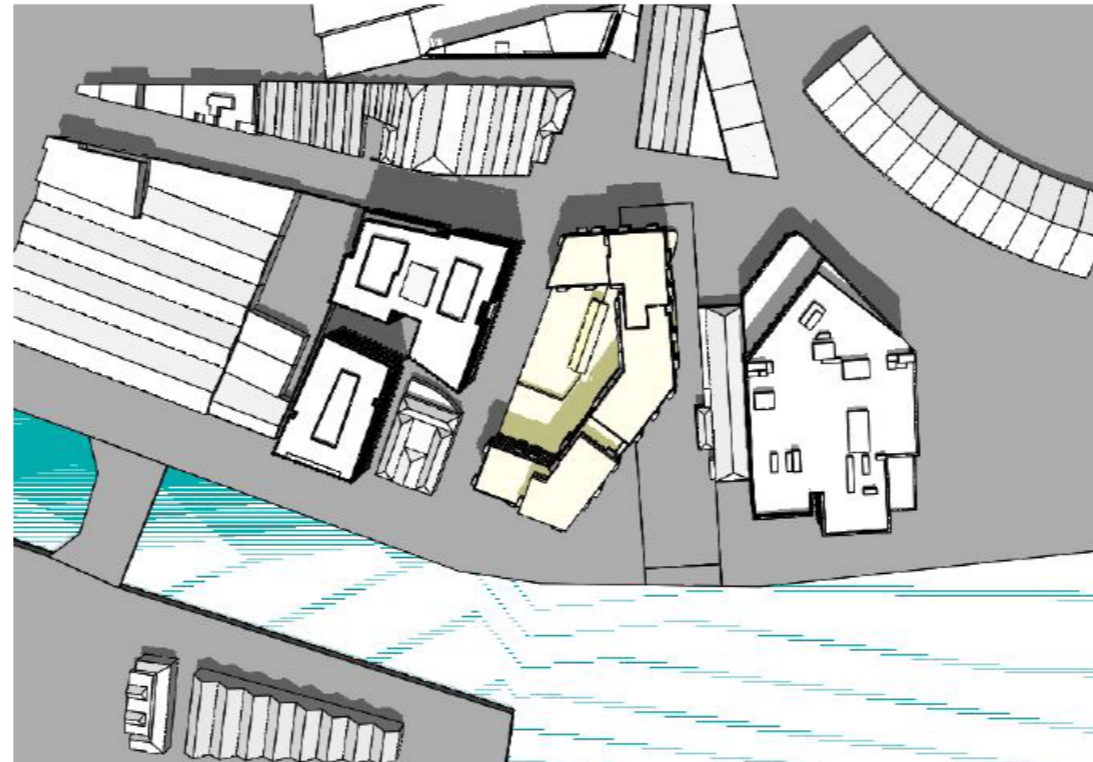
The light and shadow study accompanying this application has informed the development and layout of the open spaces.

The following images illustrate the light and shadows on the site with regard to the open spaces at different times of the year.

Site Analysis: Light and Shadow Study



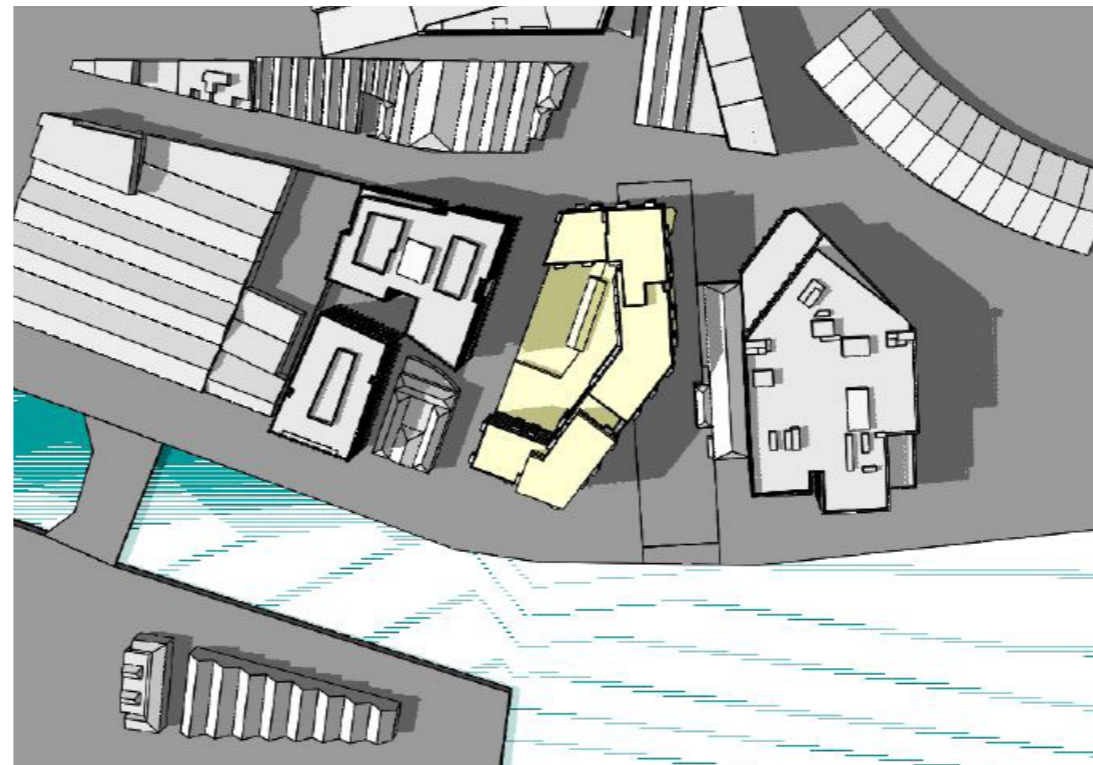
June 1000h



June 1200h

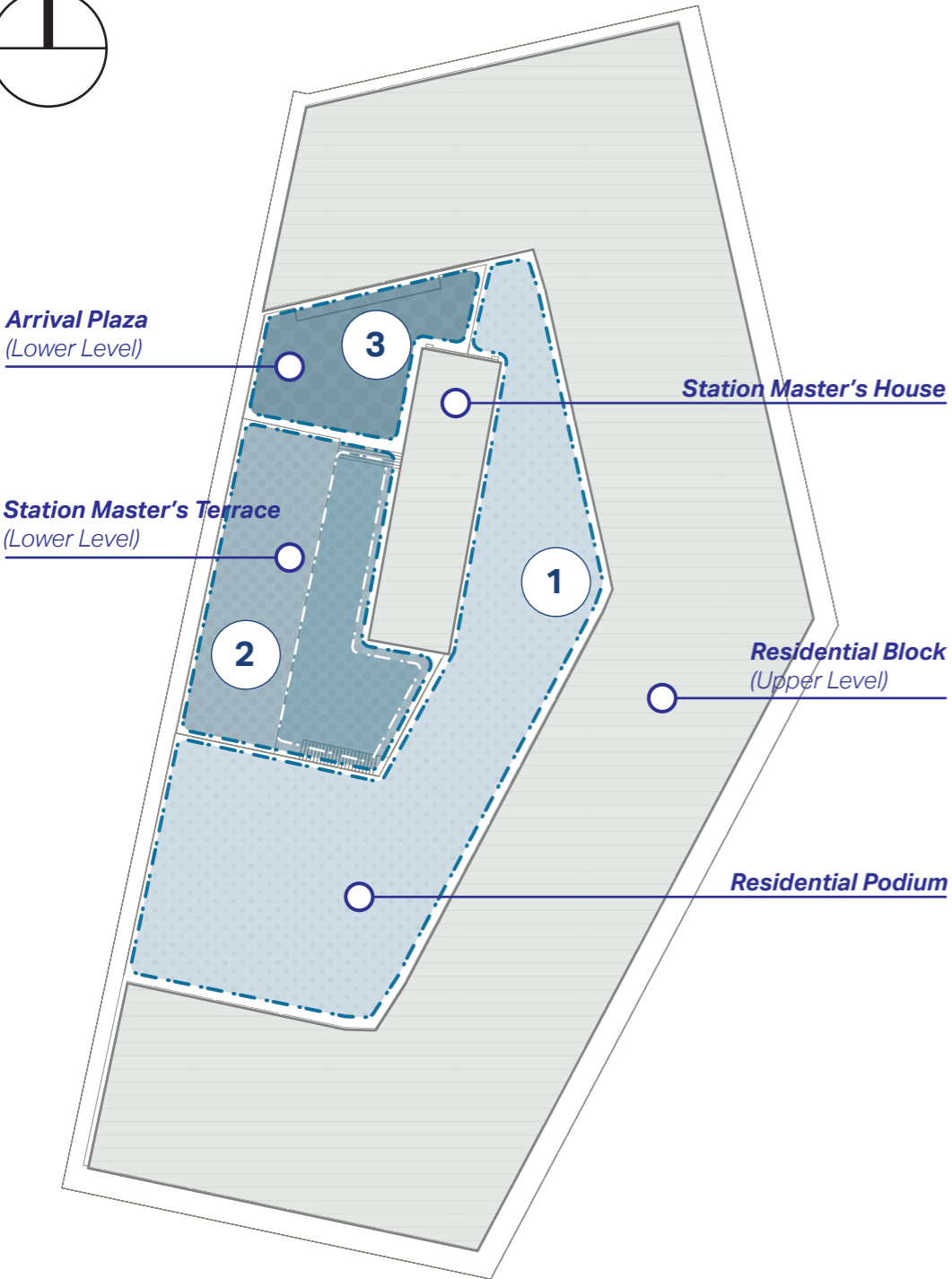
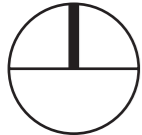


June 1400h



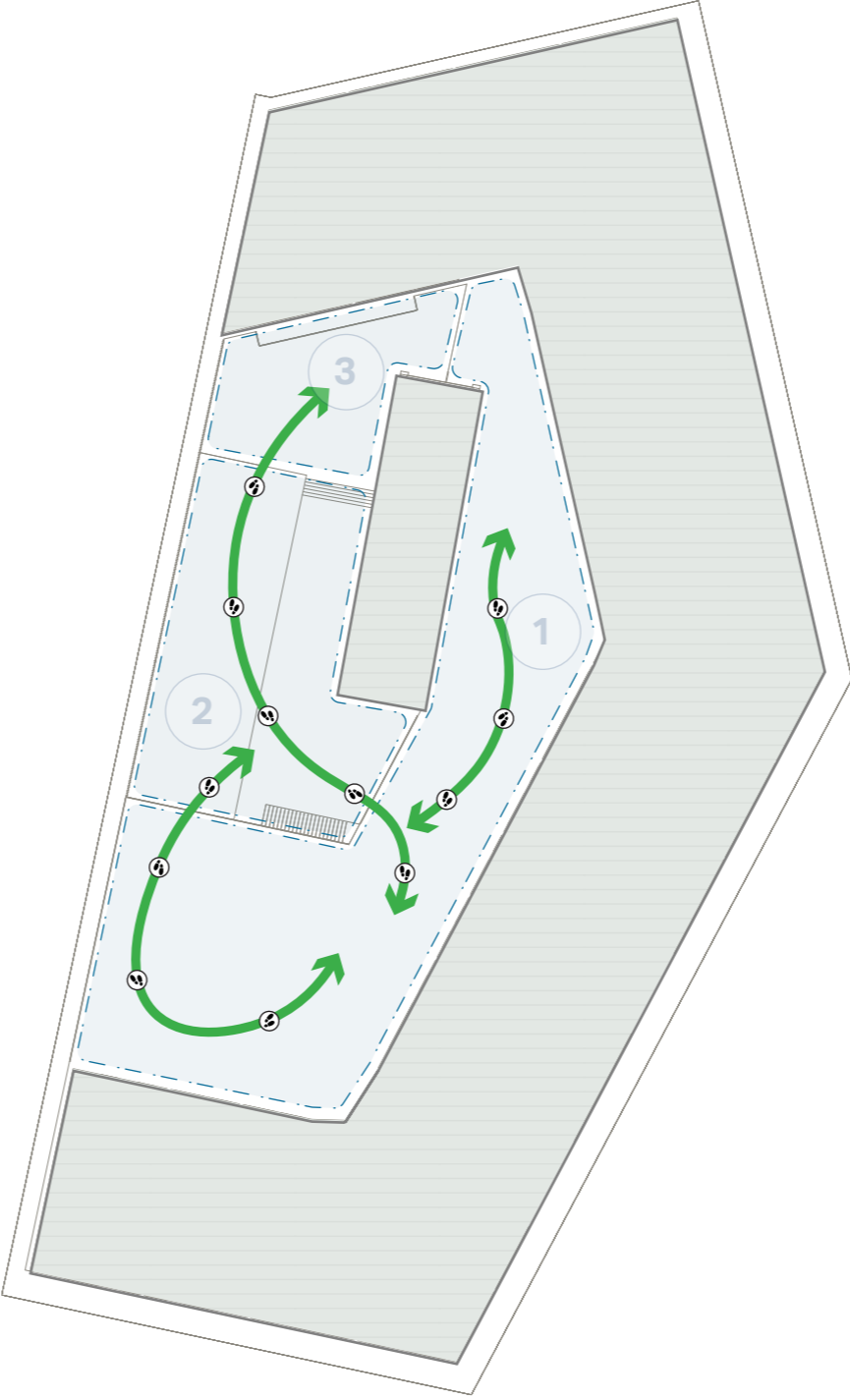
June 1600h

Design Strategy: Zoning and Permeability



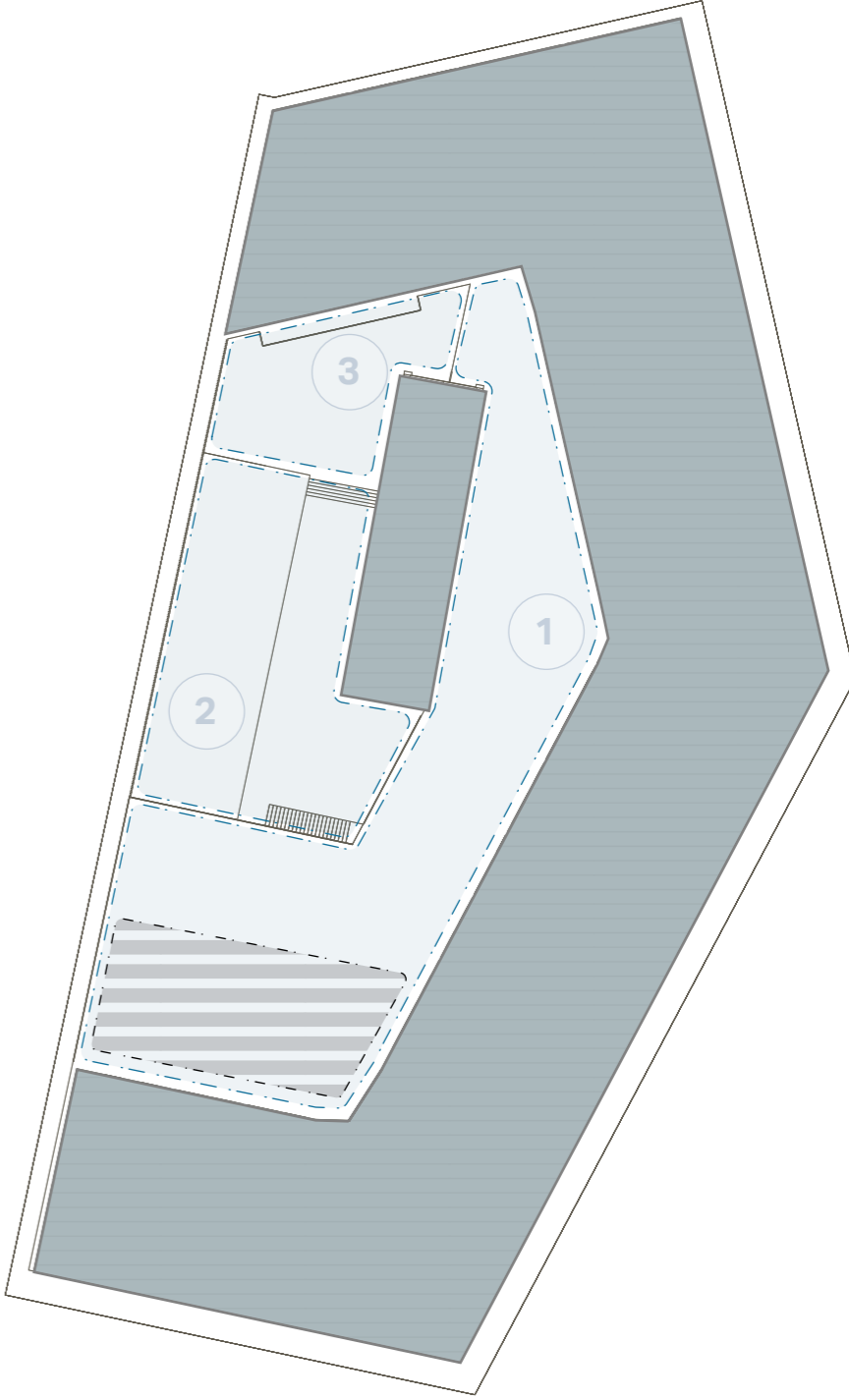
Defining the Zones

The space is comprised of a series of spaces across varying levels.



User Movement

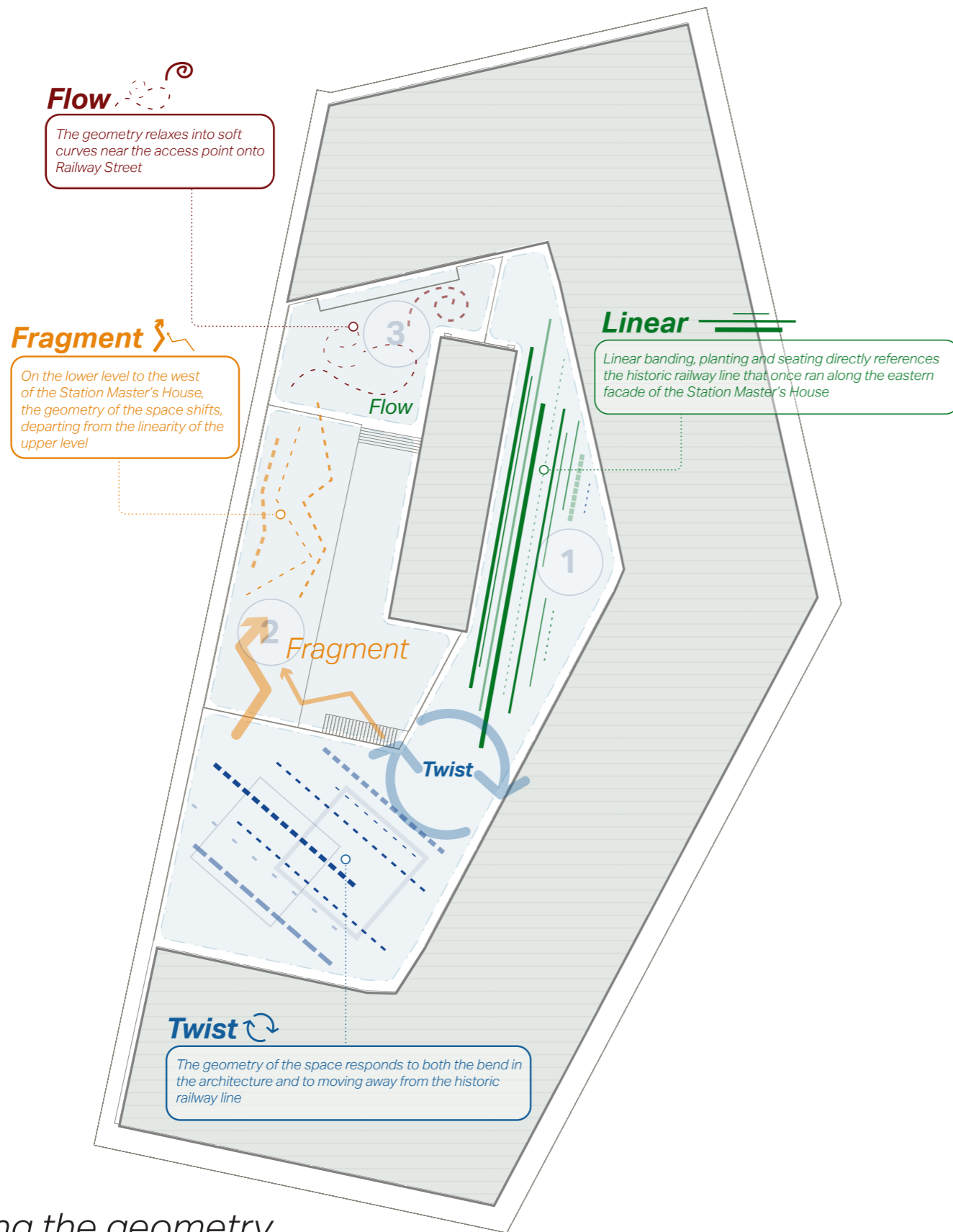
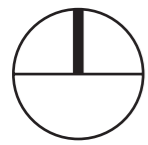
The design intent aims to connect the separate spaces while also generating a unique and defining character for each.



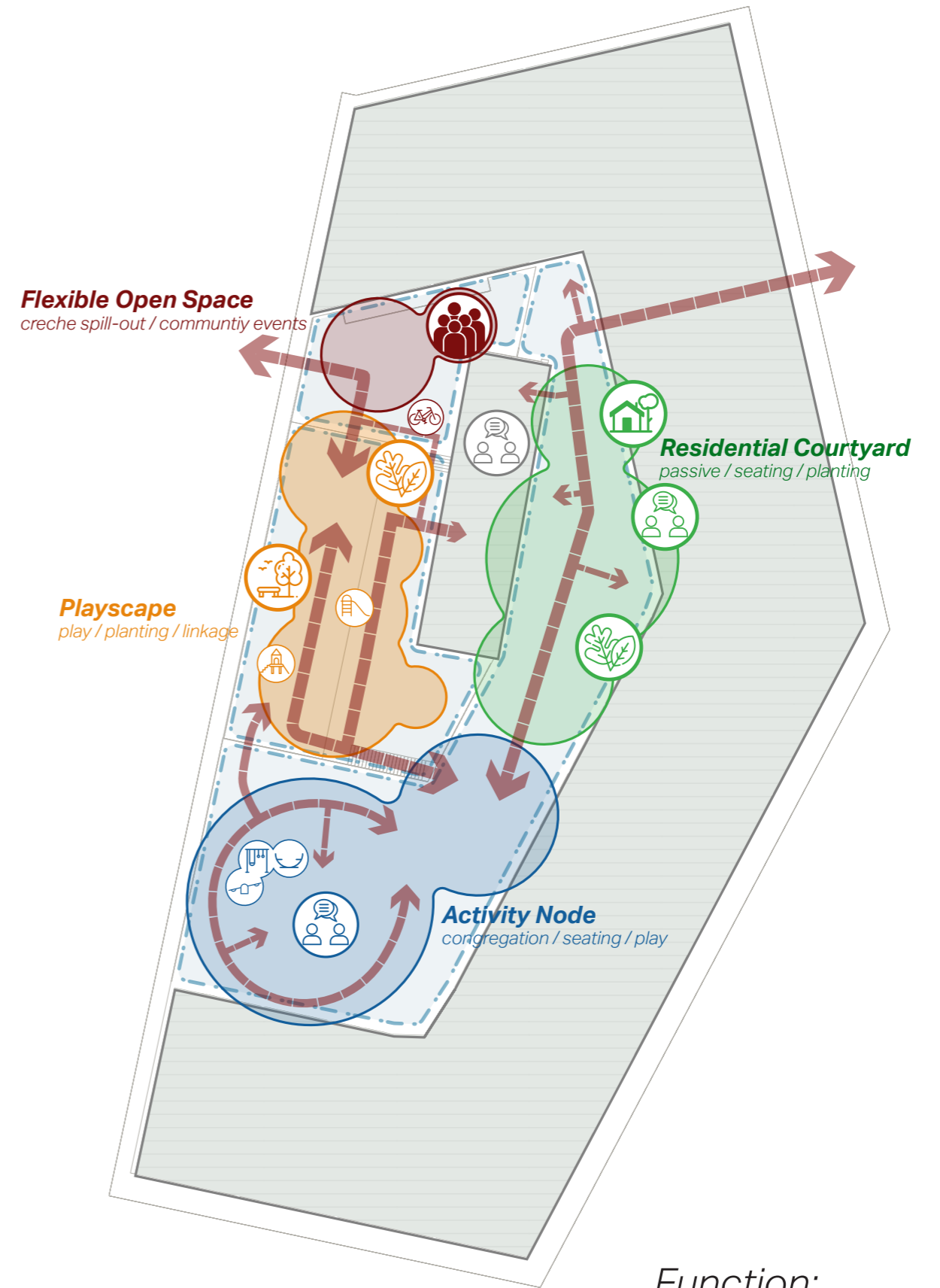
Sun Movement

Analysis of sun movement and shadows has identified the above hatched area as a year round shade zone.

Design Strategy: Concept Approach

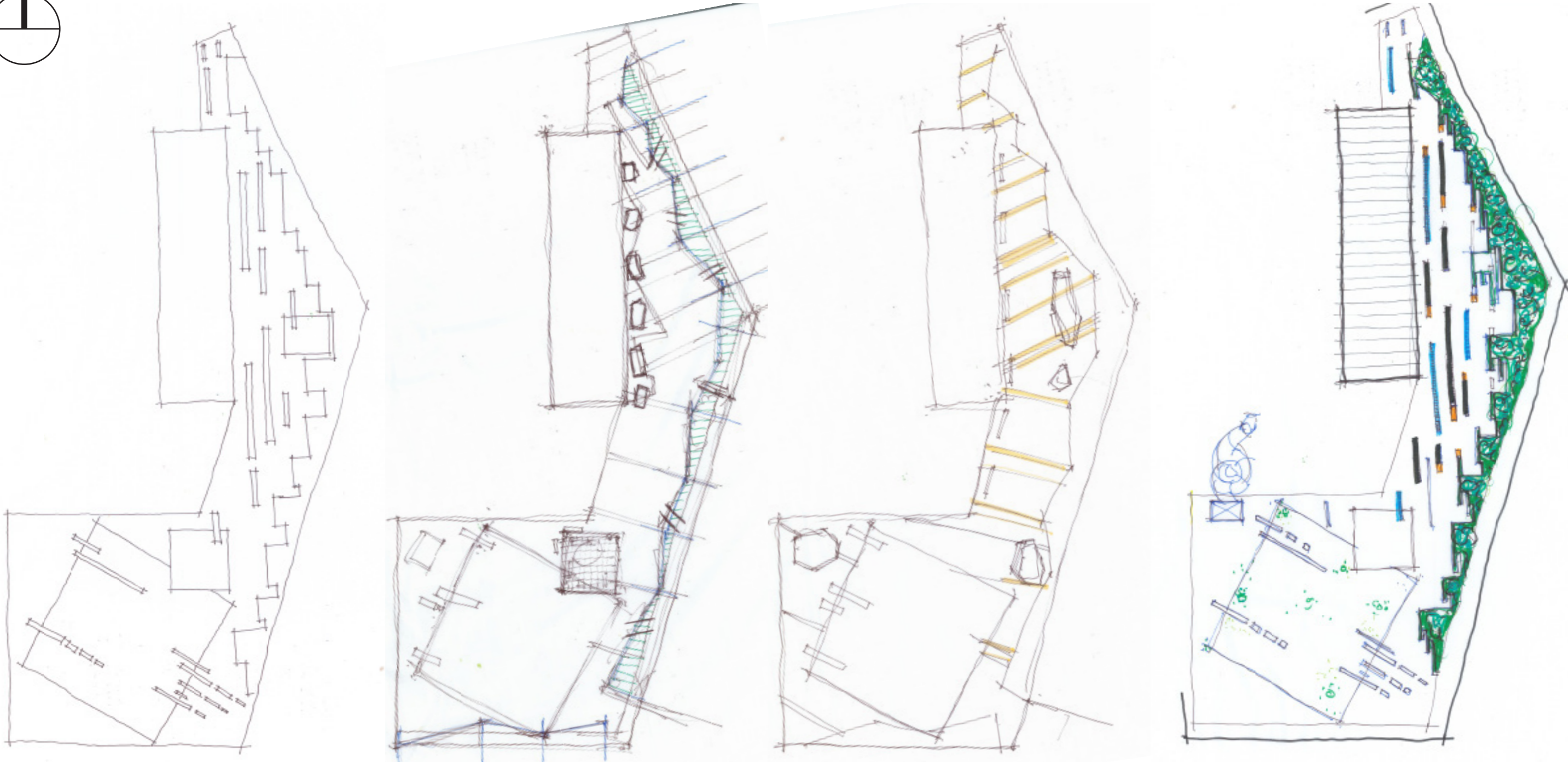


Defining the geometry



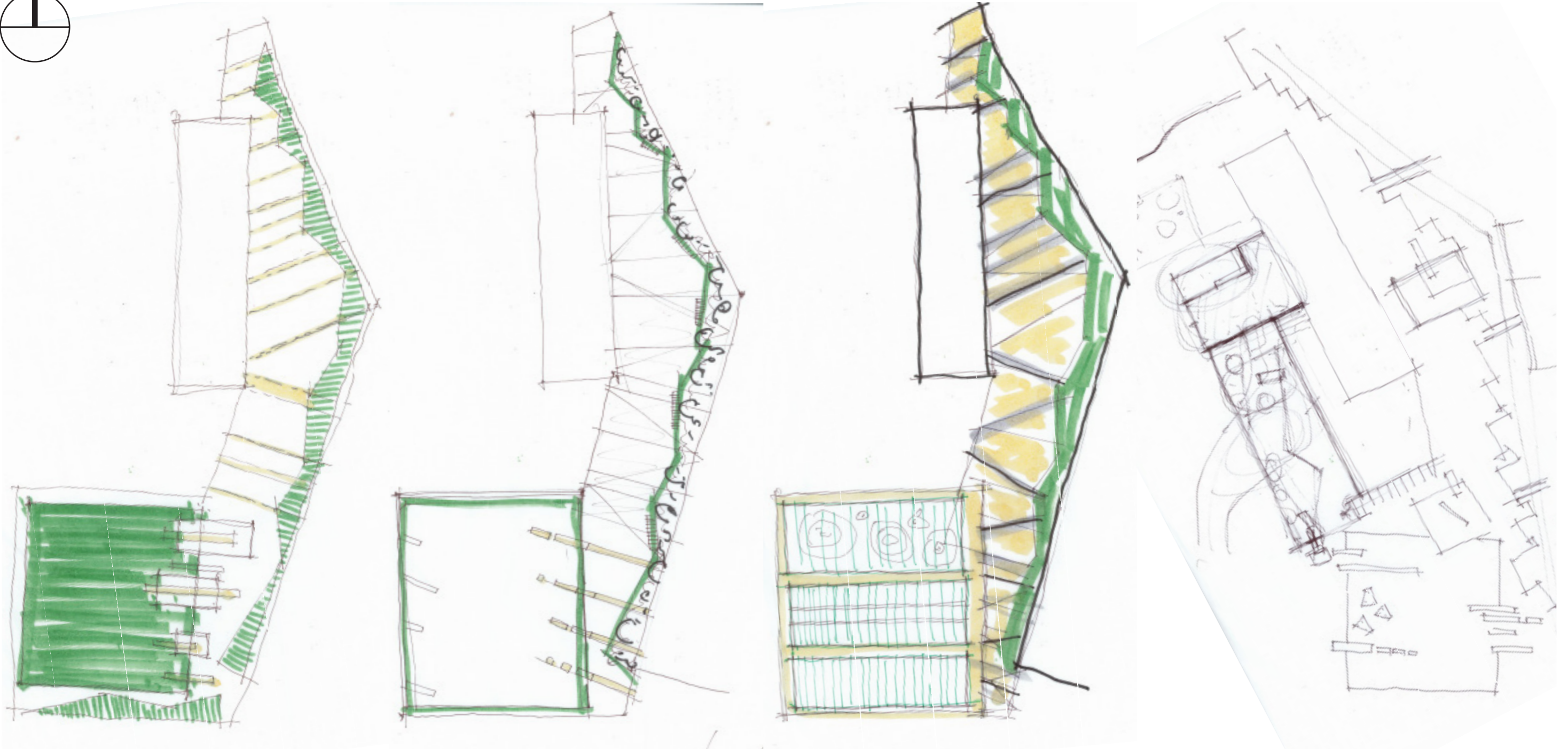
Function:
Activating spaces

Design Strategy: Sketch Development

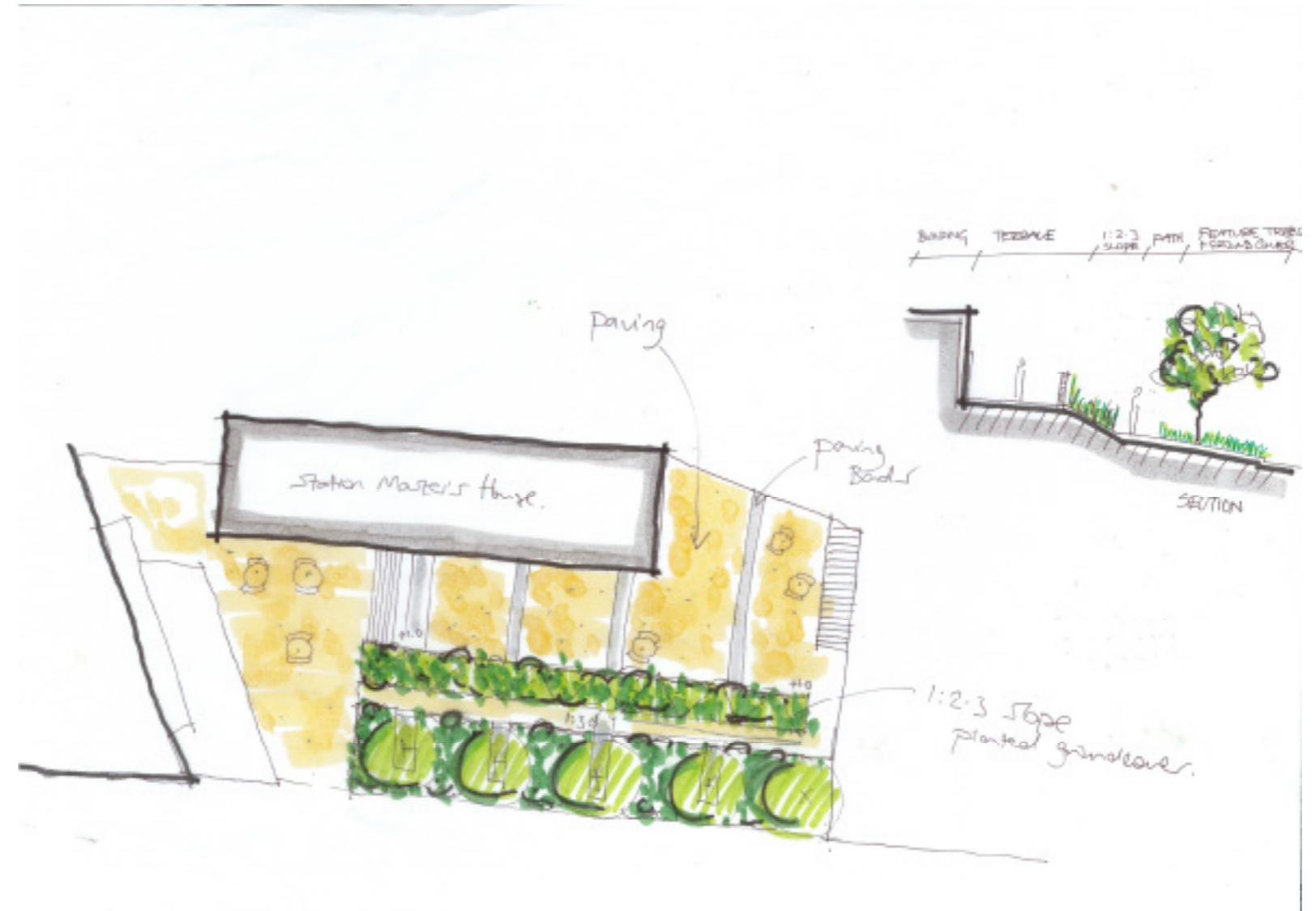
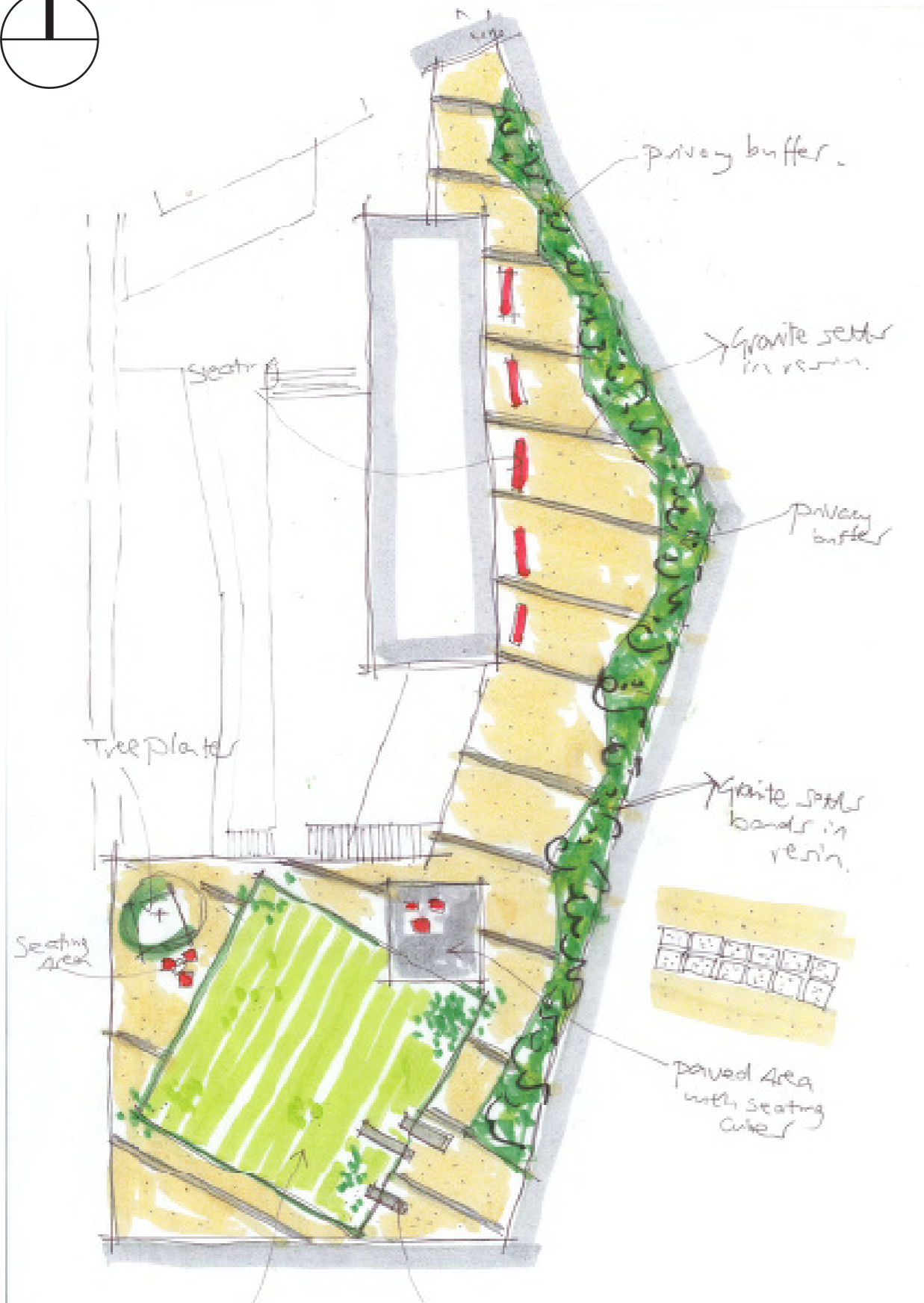
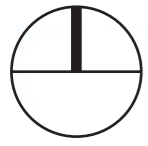


The above sketches have been prepared during the design development stage

Design Strategy: Sketch Development

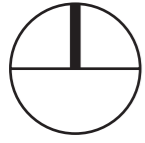


Design Strategy: Sketch Development



The above sketches have been prepared during the design development stage

Design Strategy: Sketch Design



Design Vision and Intent

The landscape architectural proposals aim to create a series of open spaces that are connected physically and through the use of complementary hard and soft materials. The railway heritage on the site has informed the concept development and contribute to the overall geometry proposed.

Materials have been chosen to create a distinctive neighbourhood character for the site and to promote the spaces as people places to spend time and congregate. This fun, split level space is activated through the use of seating areas, a recreational artificial lawn with play mounds, hammocks, walkways and steel slides. The lower area features several barbeque grills and timber picnic bench areas to encourage community interaction and year round useability of the site for all ages.

Design Strategy: Residential Podium - Materiality

Hard Materials Palette (Refer to hardworks schedule for full material list)



600x150mm / PCC Block Paving / Silver



600x150mm / PCC Block Paving / Graphite



Brass Inlay

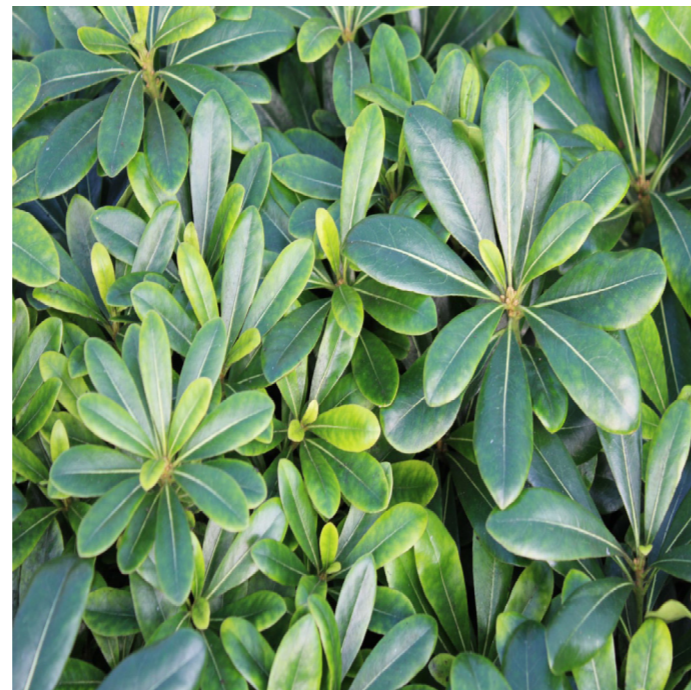


Corten Steel

Soft Materials Palette (Refer to planting schedule for full plant list)



Fatsia japonica



Pittosporum tobira



Polystichum setiferum



Tiarella cordifolia

Design Strategy: Residential Podium - Precedent Images



Design Strategy: Station Master's House - Materiality

Hard Materials Palette (Refer to hardworks schedule for full material list)



600x150mm / PCC Block Paving / Graphite



Resin Bound Gravel / Buff



Resin Bound Gravel / Grey



Corten Steel

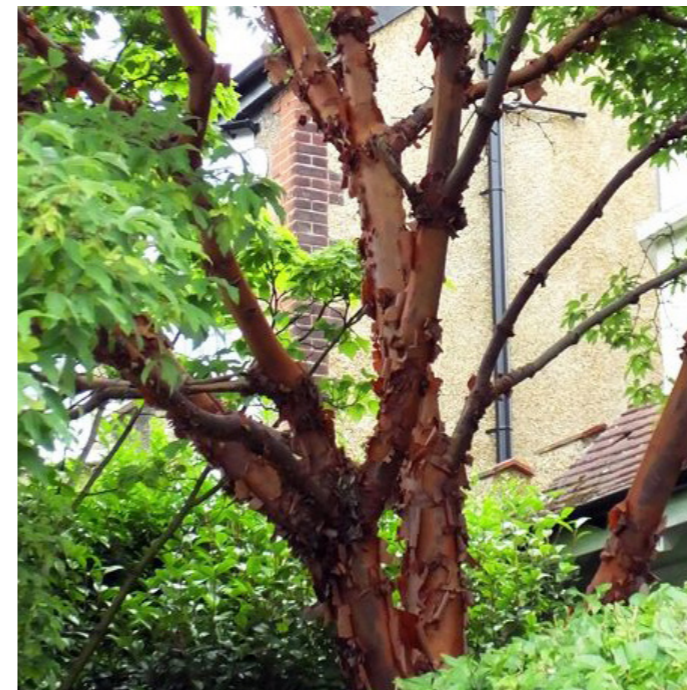
Soft Materials Palette (Refer to planting schedule for full plant list)



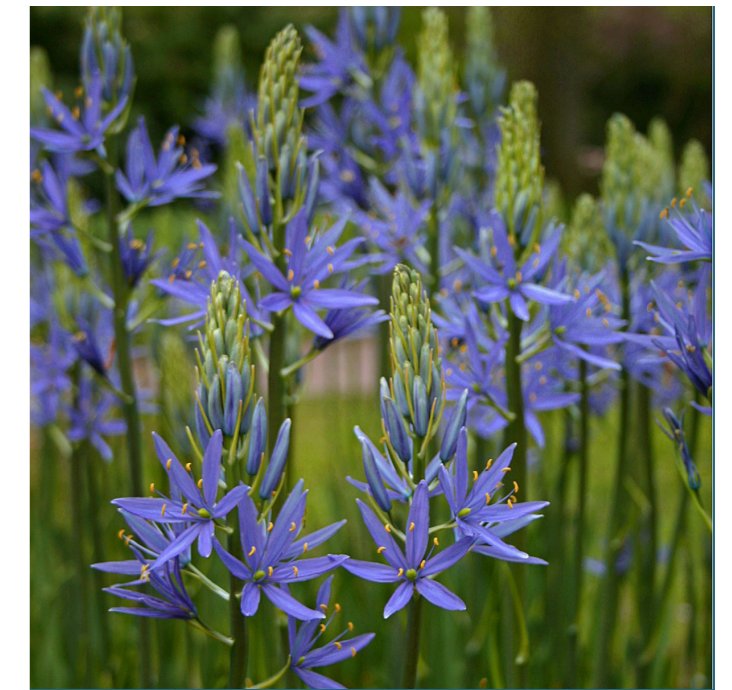
Pennisetum hameln



Iberis sempervirens

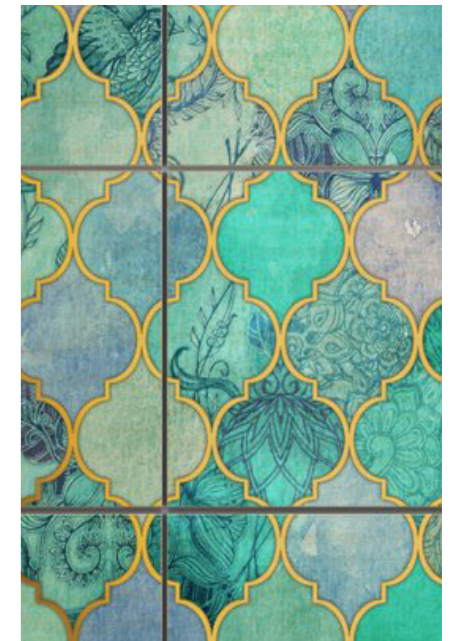


Acer griseum



Camassia leichtlinii

Design Strategy: Station Master's House - Precedent Images



Furniture



Block timber seating



Timber communal picnic tables



Net hammocks and timber poles

Hardworks / Softworks Schedule

Hardworks Schedule					
Code	Use	Location	Material	Size (mm)	Colour
HW-01	Paving	Site Wide	PCC Block Paving	600x150x80	Silver
HW-02	Feature paving bands	Site Wide	PCC Block Paving	600x150x80	Graphite
HW-03	Paving	Site Wide	Resin Bound Gravel	NA	Buff
HW-04	Paving	Lower Area	Resin Bound Gravel	NA	Grey
HW-05	Paving	Upper Area	Brass Inlay	10x1000	Gold
HW-06	Edging	Upper	Corten Steel	150 upstand	Copper
HW-07	Edging	Lower	Corten Steel	150 upstand	Copper
HW-08	Artificial Grass	Site Wide	Artificial Grass	NA	Green

Softworks Schedule									
Feature Trees									
No.	SPECIMEN TREES	Qty	Form	Age / Condition	Girth	Clear Stem	Height	Roots	Comments
T1	Pyrus calleryana 'Chanticleer'	1	Std	3 x transplanted	25-30 cm	2.0m	min. 450cm	Rootball	Well formed crown
T2	Acer griseum	4	Multi - Stem	3 x transplanted	n/a	n/a	min. 450cm	Rootball	3 stems

Shrub and Grass Mix 1 (SGM1)					
Species	Designation	Root Type	Height mm	Spread mm	% Mix in Area
Fatsia japonica	Container Grown	5 Litre Pot	800-1000	500-700	10%
Euonymus fortunei 'Emerald Gaiety'	Container Grown	2 Litre Pot	200-300	200-300	10%
Sarcococca hookeriana	Container Grown	2 Litre Pot	300-500	300-500	20%
Pittosporum tobira	Container Grown	5 Litre Pot	500-700	500min	10%
Hebe 'Green Globe'	Container Grown	3 Litre Pot	100-200	200-300	10%
Polystichum setiferum	Container Grown	3 Litre Pot	300-500	300-500	20%
Tiarella cordifolia	Container Grown	2 Litre Pot	200-300	200-300	10%
Carex oshimensis 'Everest'	Container Grown	2 Litre Pot	200-300	300-500	10%

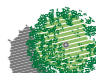


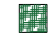







Shrub and Grass Mix 2 (SGM2)					
Species	Designation	Root Type	Height mm	Spread mm	% Mix in Area
Pennisetum hameln	Container Grown	2 Litre Pot	500-700	300-500	70%
Iberis sempervirens	Container Grown	2 Litre Pot	50-100	100-200	30%

Shrub Mix (SM)					
Species	Designation	Root Type	Height mm	Spread mm	% Mix in Area
Iberis sempervirens	Container Grown	2 Litre Pot	50-100	100-200	100%

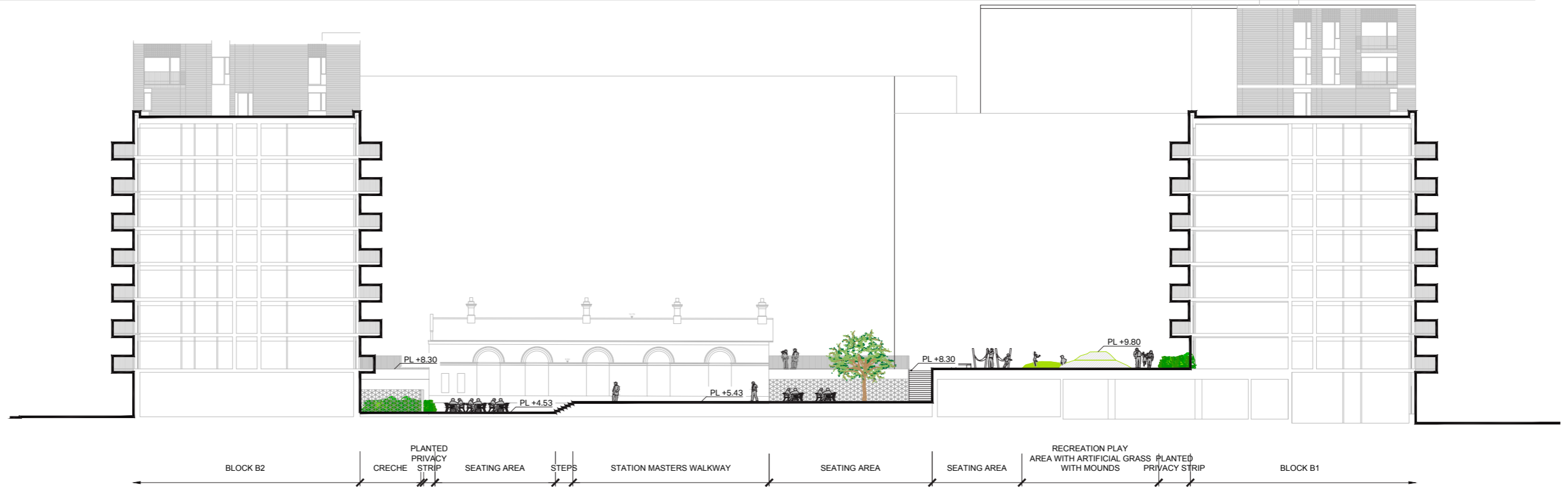
Landscape Masterplan: General Arrangement Plan



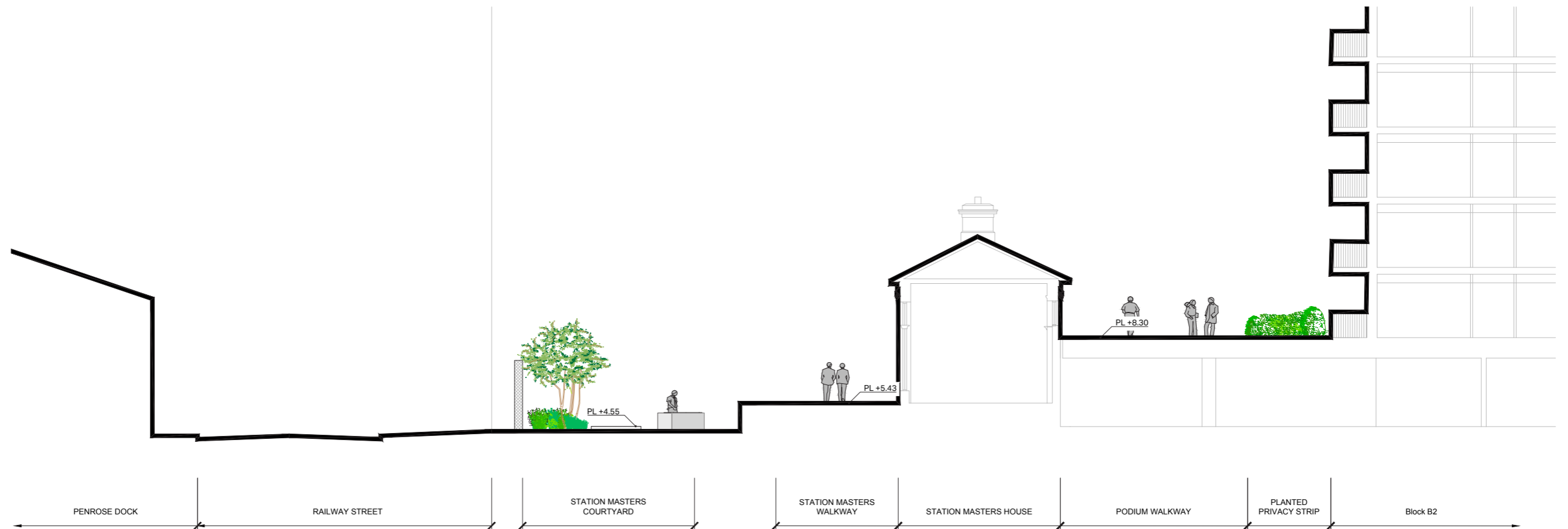
Scale 1:1000 @A3

-  TREE TYPE 1
REFER TO PLANTING SCHEDULE FOR DETAILS
-  TREE TYPE 2
REFER TO PLANTING SCHEDULE FOR DETAILS
-  SHRUB MIX 1
REFER TO PLANTING SCHEDULE FOR DETAILS
-  SHRUB MIX 2
REFER TO PLANTING SCHEDULE FOR DETAILS
-  ARTIFICIAL LAWN
REFER TO PLANTING SCHEDULE FOR DETAILS
-  600 X 150MM PCC BLOCK PAVING
COLOUR: SILVER
-  600X150MM PCC BLOCK PAVING
COLOUR: GRAPHITE
-  BRASS INLAY
-  RESIN BOUND GRAVEL
PERMEABLE BASE 12-14MM BARLEY BEACH
-  RESIN BOUND GRAVEL
PERMEABLE BASE 12-14MM GREY
-  ELEVATED WALKWAY

Landscape Masterplan: Sections



SECTION A-A
Scale 1:200@A1



SECTION B-B
Scale 1:100@A1

About AECOM

AECOM is built to deliver a better world. We design, build, finance and operate infrastructure assets for governments, businesses and organizations in more than 150 countries. As a fully integrated firm, we connect knowledge and experience across our global network of experts to help clients solve their most complex challenges. From high-performance buildings and infrastructure, to resilient communities and environments, to stable and secure nations, our work is transformative, differentiated and vital. See how we deliver what others can only imagine at aecom.com and [@AECOM](https://twitter.com/AECOM).

Follow us on Twitter: [@aecom](https://twitter.com/aecom)

Contact
Ed Frampton
Associate
T +353 (0)87 410 2004
edward.frampton@aecom.com

AECOM